

## DAP, MS, CMM, Secondary Stop Installation

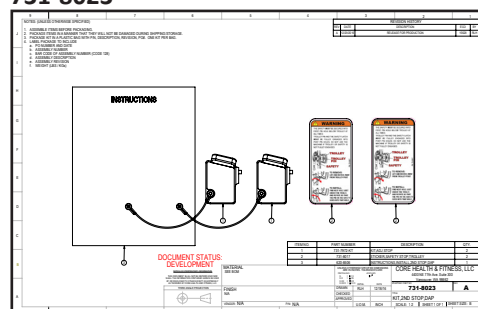
**731-4171, 731-4175, D9302, IPDA2, M9201, M9605, M9619**

Depending on unit, use table below to determine which kit to install.

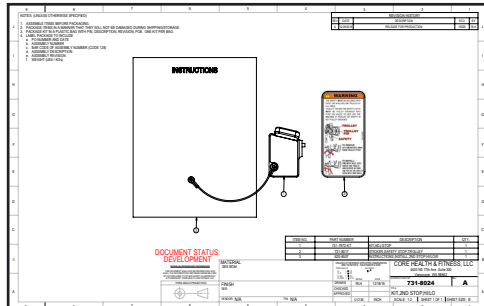
Unit	Kit(s) Needed
DAP	731-8023 x1
Cable Cross	731-8025 x2
5-Station	731-8025 x1 & 731-8024 x1
9-Station	731-8024 x2
14 Station	730-8024 x4
21 Station	731-8024 x6

**Kit Details** (Click picture to expand)

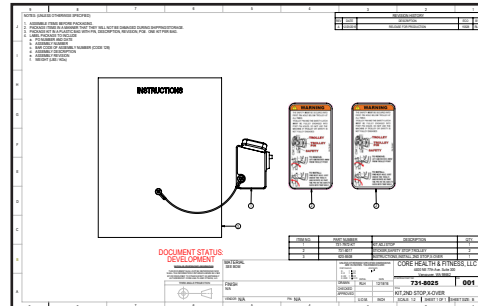
### 731-8023



### 731-8024

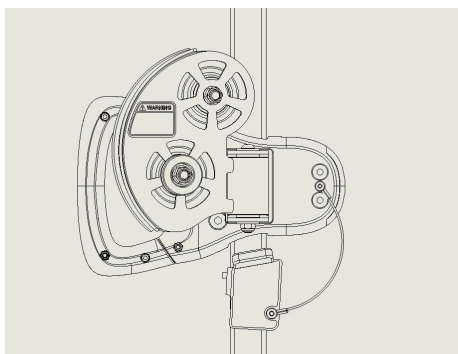


### 731-8025

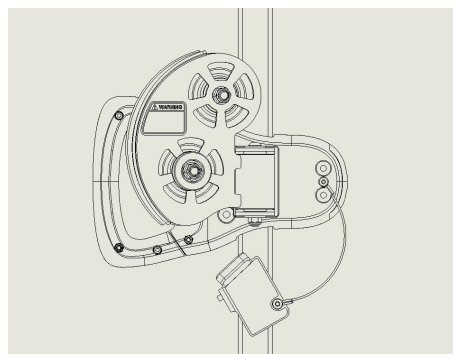


### Use

The stop is used under the handle as shown below. To move the stop to a new position, pull the front part forward as shown in the right picture below, then secure it to the position below the lowest desired handle position as shown on the left.



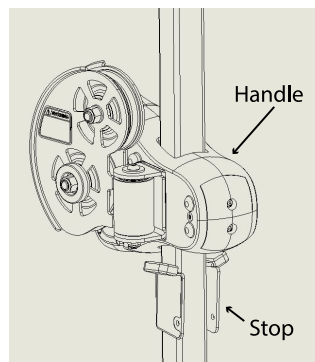
*Stop in Use Position*



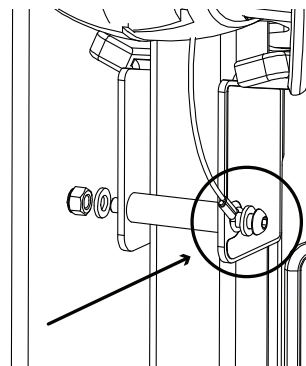
*Moving the Stop to New Position*

## Installation directions

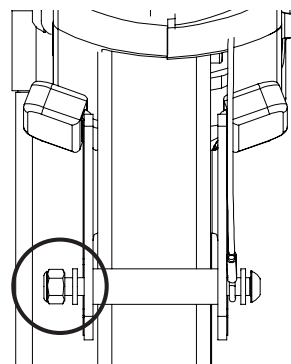
1. Place stop below handle hanging on any available point. Move handle towards top of unit to make room if necessary.



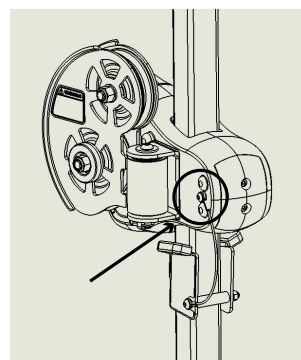
2. Insert bolt #731-5390 through one washer #731-0373 and the lanyard #731-8026 on the left hand side, then through the stop and through the spacer #731-7971 to the other side which has 1 washer and a nyloc nut #731-1363.



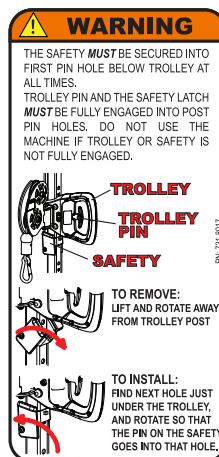
3. Tighten fastener until 2 threads appear on outside of nylock.



4. Attach lanyard from stop to handle. Remove old fastener #740-7186 and replace with fastener #740-7186 with lanyard attached as shown. Fully tighten new fastener.



5. Apply the warning labels #731-8017 included in the kit(s) to the locations marked below



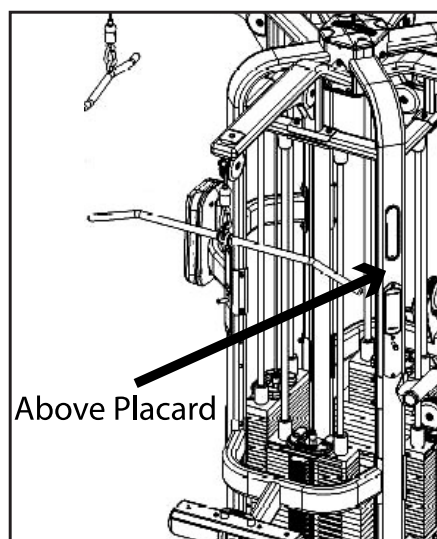
DAP	2 labels
Cable Cross	4 labels
5-Station	3 labels
9-Station	2 labels
14 Station	4 labels
21 Station	6 labels

- a. 9, 14 & 21 Multistations:

Apply instructional sticker above Hi/Lo Placard. Repeat for each station.

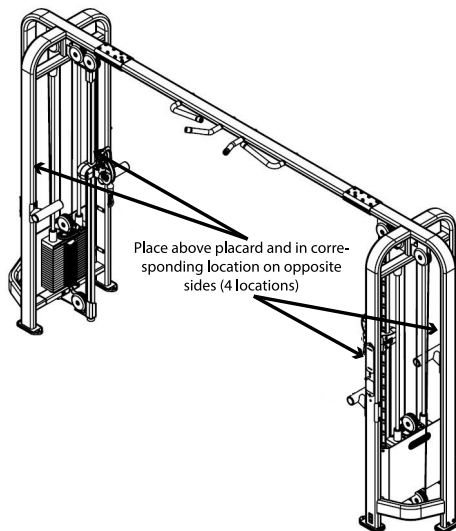
- b. 5-Station Multistation:

Apply 1 instructional sticker above Hi/Lo Placard on the four sided tower. Apply 2 instructional stickers on the Hi/Lo station single tower, 1 on each side of the tower.



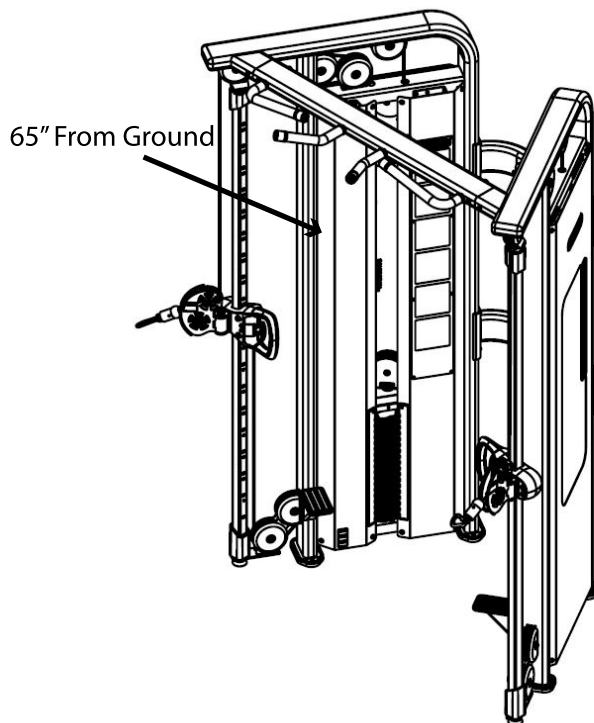
- c. Cable Cross-Over (4 labels)

Apply labels above placard with corresponding label on opposite side as shown



- d. DAP units (2 labels)

Apply decals 65" off of ground in indicated location on both sides of unit



## Instructions

1. Adjust the pulley carriage to the desired height
2. Engage pulley carriage pop pin, ensuring it is fully deployed
3. Secure the secondary stop system pin into the first pin hole below the carriage. The secondary stop system must be fully engaged below the carriage at all times.
4. Prior to using the unit make sure that both the pulley carriage pop pin and the secondary stop system pin are fully engaged into the post pin holes. Do not use the unit if either the carriage or secondary stop system is not fully engaged.
5. To move the secondary stop to a new position, lift and rotate it away from the post.
6. To install it in a new position, move the carriage to desired location and fully engage carriage pop pin. Repeat steps 1-4.

Instructions for use are also contained on the warning sticker included in the stop installation kits:

